

OWNER'S MANUAL



WARNING

**THIS PRODUCT IS ONLY TO BE
USED WITH THE CORRECT
TRAIL-A-MATE SIDEWINDER
ENGAGEMENT FITTING**



← As a jockey wheel

As a caravan jack →



PLEASE FAMILIARISE YOURSELF WITH THIS MANUAL BEFORE
USING YOUR TRAIL-A-MATE SIDEWINDER TO PREVENT
DAMAGE TO PROPERTY OR PERSONAL INJURY

THIS PRODUCT IS MANUFACTURED TO AUS/ NZ STANDARDS 2693:2003

W.L.L. 500KG

IMPORTANT

TRAIL-A-MATE SIDEWINDER IS ONLY TO BE USED ON SINGLE AXLE CARAVANS / TRAILERS UP TO 4.8 METRES (16 FEET) IN LENGTH WITH AN AXLE RATING OR G.T.M. OF 1600KGS.

HOW TO USE YOUR SIDEWINDER JOCKEY WHEEL

1. The base plate must be fitted in order to lift the W.L.L. of 500 kg
2. Wind the handle clockwise to raise.
3. Wind the handle counter-clockwise to lower.



CAUTION

LIABILITY WILL NOT BE ACCEPTED IF JOCKEY WHEEL IS LEFT FITTED TO TOWED VEHICLE WHILE TRAVELLING

IMPORTANT WARNING

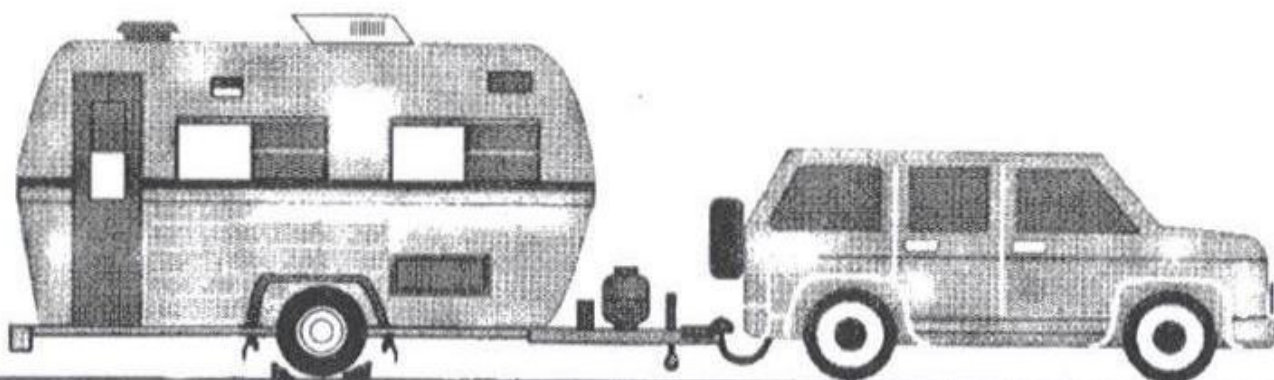
PLEASE READ INSTRUCTIONS THOROUGHLY

Before using your sidewinder jack, you should ensure the following

**THIS JACK SHOULD BE USED
ONLY WITH THE TRAIL-A-MATE
ENGAGEMENT FITTING.**

- The jack should be used on hard level surfaces only.
- It is recommended that the tow vehicle be in the "Park" position with
- the handbrake on and wheels chocked on the caravan or trailer.
- The jack should be used for lifting and lowering only.
- The raised vehicle should be supported on vehicle support stands.

**NO PERSON SHOULD
REMAIN IN A VEHICLE
THAT IS BEING JACKED.**



CAUTION

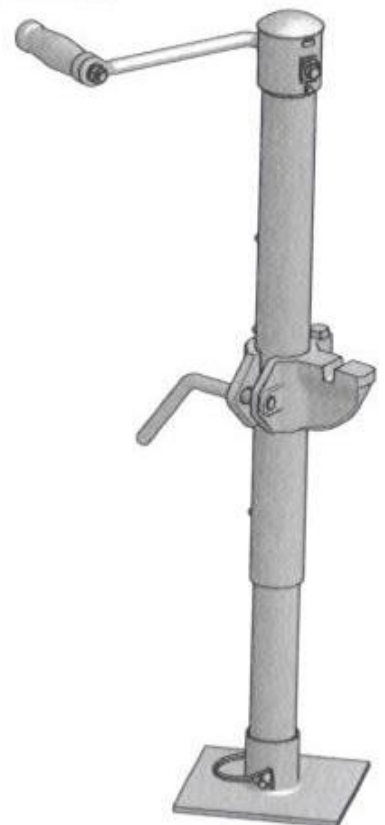
NO PERSON SHOULD PLACE ANY PORTION OF THEIR BODY UNDER A VEHICLE THAT IS SUPPORTED ONLY BY A JACK. USE VEHICLE SUPPORT STANDS

HOW TO CONVERT SIDEWINDER JOCKEY WHEEL INTO A JACK.

1. You **MUST REMOVE** wheel and fit base plate to use as a jack.
2. Fit lifting clamp to outer shaft cover between the lugs.
3. Make sure lifting clamp handle is done up tightly.
4. Position jack alongside the vehicle so that the slot in the saddle is centred below jacking bracket on caravan.
5. Wind your sidewinder clockwise until slot in saddle is locked into jacking bracket on caravan.
6. Continue to wind your jack to desired height.
7. When finished, remove support stands and wind counter-clockwise to lower vehicle.

Minimum height of sidewinder: 600mm
Maximum height of sidewinder: 950mm
Maximum lifting range: 350mm

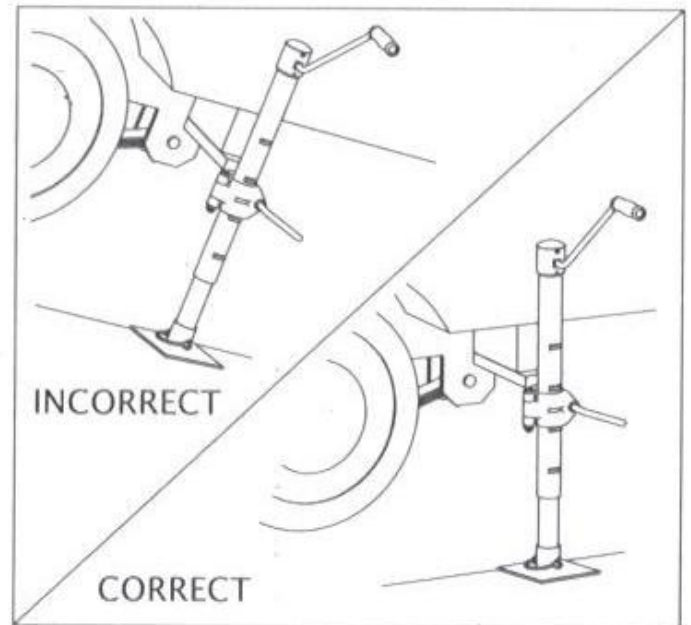
W.L.L. 500 kg



COMPLETE ASSEMBLY

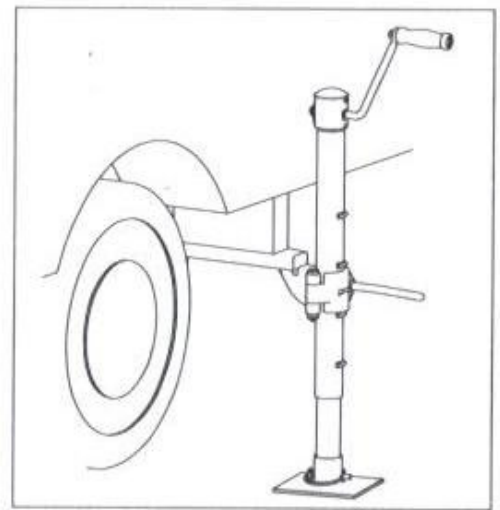
1. TERRAIN CHOOSING

The jack should be used on firm level ground wherever possible.



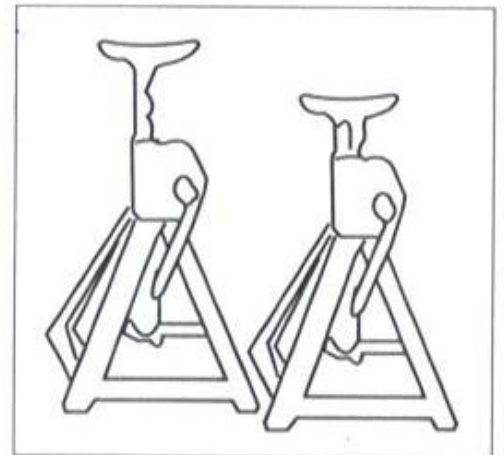
2. PROPER POSITIONING

The jack should be positioned under the Trail-A-Mate engagement fitting. This MUST be located on the cross-member at the REAR of the axle.



3. WORKING UNDER THE VEHICLE

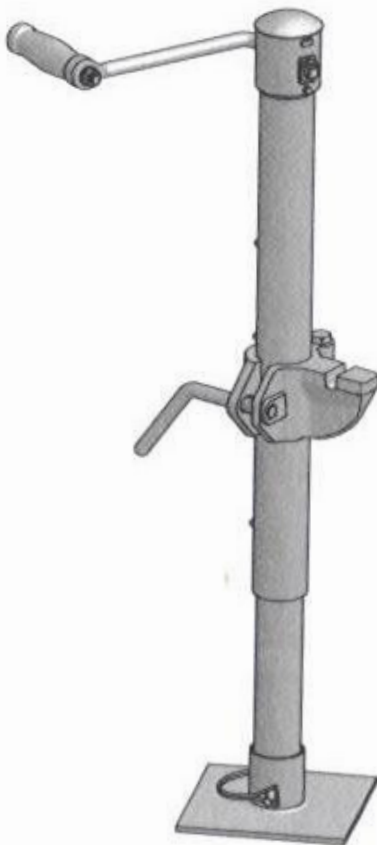
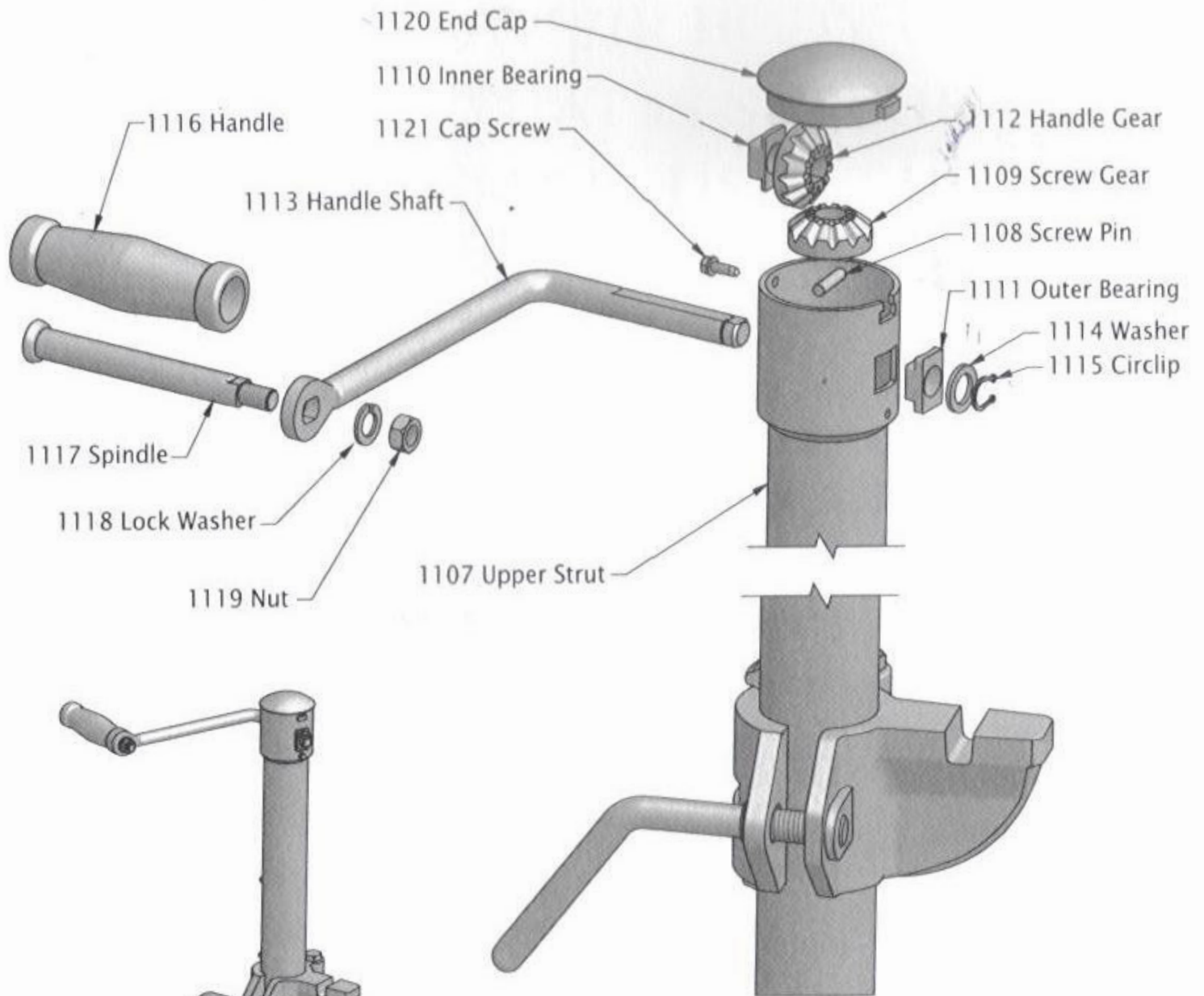
The jack should be used for lifting and lowering only. The raised vehicle should be supported on vehicle support stands.



WARNING

NO PERSON SHOULD GET UNDER A VEHICLE THAT IS SUPPORTED ONLY BY A JACK

UPPER STRUT ASSEMBLY

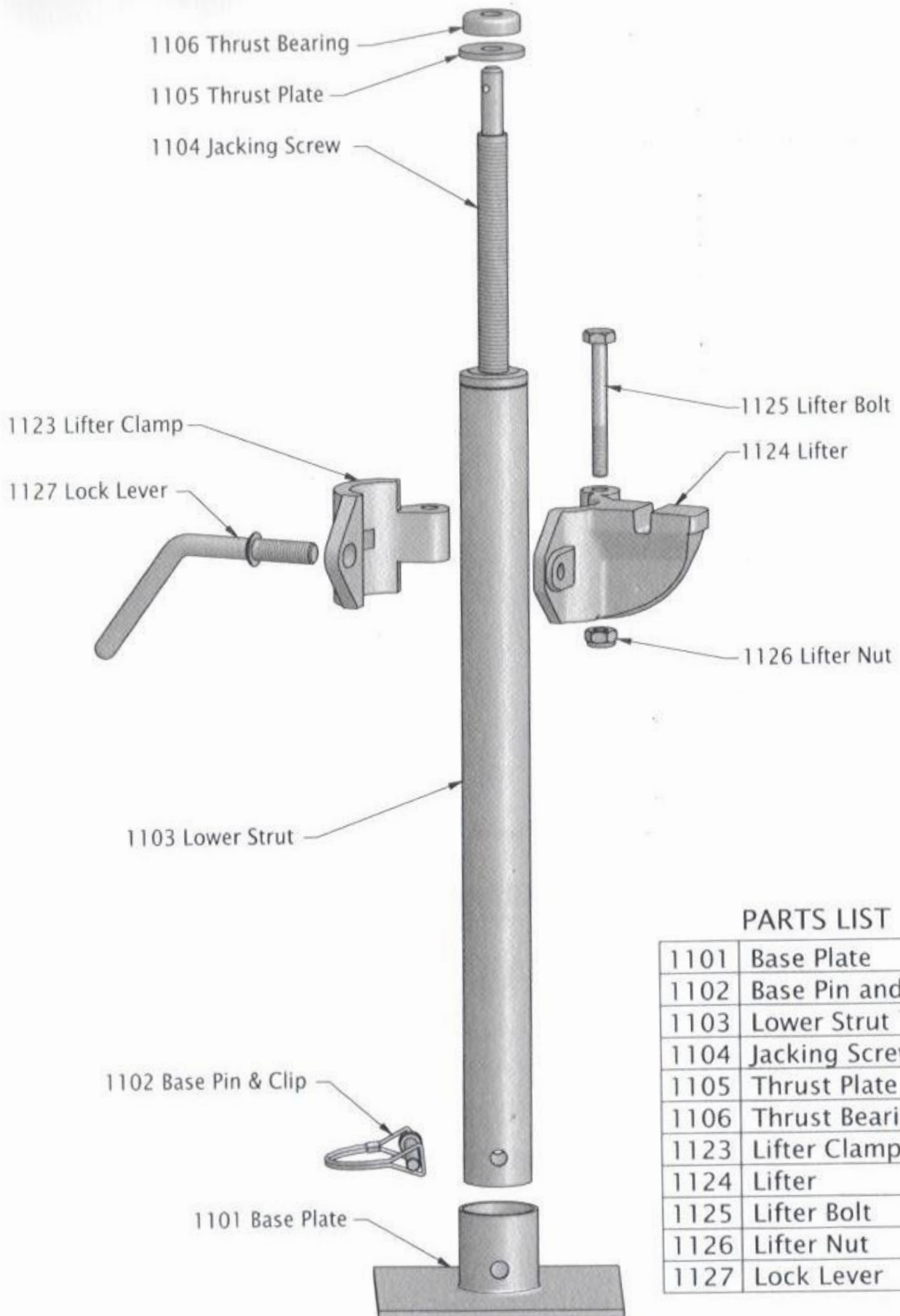


COMPLETE ASSEMBLY

PARTS LIST

1115	Circlip	1107	Upper Strut
1116	Handle	1108	Screw Pin
1117	Spindle	1109	Screw Gear
1118	Spring Washer	1110	Inner Bearing
1119	Nut	1111	Outer Bearing
1120	End Cap	1112	Handle Gear
1121	Cap Screw	1113	Handle Shaft
		1114	Washer

LOWER STRUT ASSEMBLY



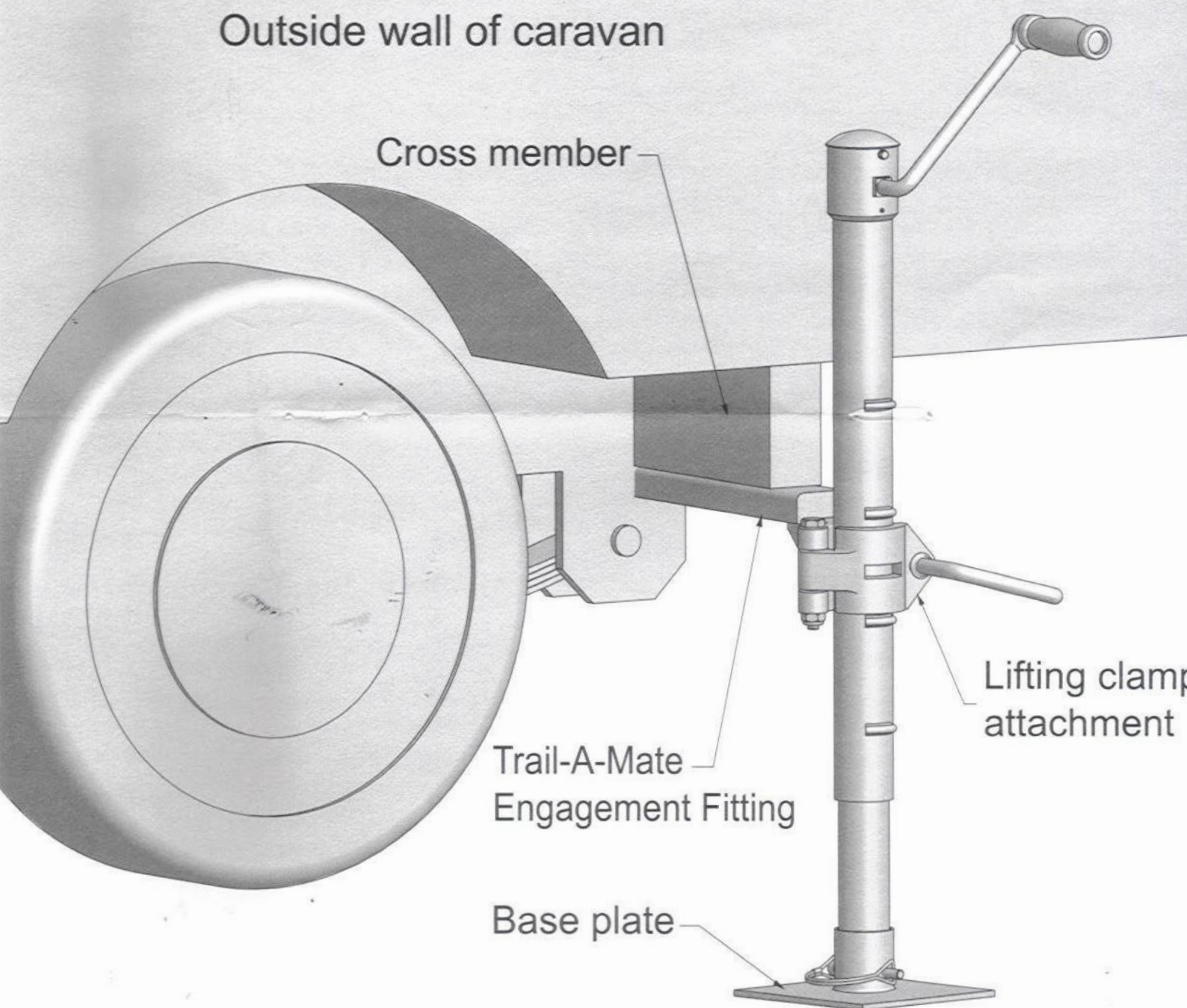
PARTS LIST

1101	Base Plate
1102	Base Pin and Clip
1103	Lower Strut
1104	Jacking Screw
1105	Thrust Plate
1106	Thrust Bearing
1123	Lifter Clamp
1124	Lifter
1125	Lifter Bolt
1126	Lifter Nut
1127	Lock Lever

FITTING INSTRUCTIONS

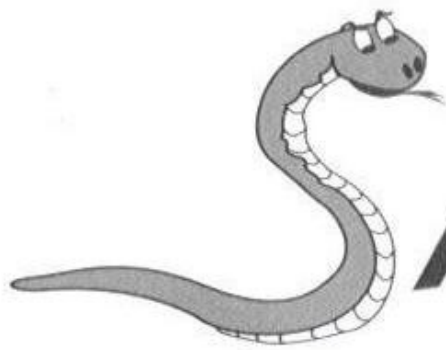
for Trail-A-Mate Sidewinder engagement fitting

Weld Trail-A-Mate Jack engagement fitting to the bottom of the cross-member at the REAR of the axle keeping flush to outside wall of caravan



IMPORTANT: PLEASE NOTE

Some older model caravans need to have cross-member at rear of axle strengthened to accommodate engagement fitting



TRAIL-A-MATE

IDEWINDER™
JACK
CARAVAN / TRAILER

Manufactured By:

SEATRA INTERNATIONAL PTY. LTD.

233 SHEPHERDS HILL ROAD, EDEN HILLS

SOUTH AUSTRALIA, AUSTRALIA, 5050

PHONE: (08) 8278 5107 FAX: (08) 8278 9269

EMAIL: seatra@iweb.net.au