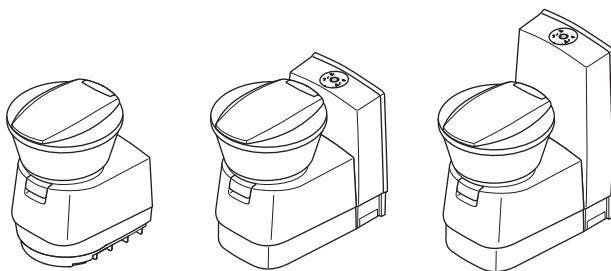


# ↗ DOMETIC SANITATION TOILETS



CT4050, CTLP4110, CTS4110

EN

**Cassette toilet**  
Installation Manual



**Please read this instruction manual carefully before installation and first use, and store it in a safe place. If you pass on the product to another person, hand over this instruction manual along with it.**

## Table of contents

<b>1</b>	<b>Explanation of symbols</b> .....	4
<b>2</b>	<b>Safety instructions</b> .....	4
2.1	General safety .....	4
2.2	Installation instructions .....	5
<b>3</b>	<b>Intended use</b> .....	5
<b>4</b>	<b>Technical description</b> .....	5
4.1	Description of the components .....	6
<b>5</b>	<b>Installing the toilet</b> .....	7
5.1	Installing the service door .....	7
5.2	Making wall cutouts .....	7
5.3	Setting up the toilet .....	8
5.4	Installing CT model .....	12
5.5	Installing models CTLP, CTS .....	17
5.6	Connecting the water supply .....	20
5.7	Venting the cartridge tank .....	21
<b>6</b>	<b>Electrical connection</b> .....	22
6.1	Connecting external water pump .....	23
<b>7</b>	<b>Technical data</b> .....	26

# 1 Explanation of symbols

**CAUTION!**

**Safety instruction:** Failure to observe this instruction can lead to injury.

**NOTICE!**

Failure to observe this instruction can cause material damage and impair the function of the product.

**NOTE**

Supplementary information for operating the product.

## 2 Safety instructions

The manufacturer accepts no liability for damage in the following cases:

- Faulty assembly or connection
- Damage to the product resulting from mechanical influences and excess voltage
- Alterations to the product without express permission from the manufacturer
- Use for purposes other than those described in the operating manual

The declaration of conformity can be requested from the manufacturer (contact information on the back).

### 2.1 General safety

**CAUTION!**

- This device can be used by children aged 8 years or over, as well as by persons with diminished physical, sensory or mental capacities or a lack of experience and knowledge, providing they are supervised or have been taught how to use the device safely and are aware of the resulting risks.
- Cleaning and user maintenance must not be carried out by unsupervised children.
- Children must be supervised to ensure that they do not play with the device.
- The toilet may be installed only by trained personnel.

**NOTICE!**

- All components of the system must be installed in frost-free areas. In freezing temperatures, there is a risk of damage caused by frost.
- Do not use antifreeze. These agents may damage the cassette toilet.
- The operating pressure (water pressure) of the solenoid valve should not exceed 6 bar. The solenoid valve is damaged by excessive pressure.
- The electrical installation must comply with national and local regulations.  
In Europe: EN 1645-1, EN 1646-1, EN 1648-1, EN 1648-2

## 2.2 Installation instructions

The toilet must be installed so that it is accessible for service work, is easy to de-install and install, and can be removed from the vehicle without much effort.

## 3 Intended use

The toilet is designed for installation and use in recreational vehicles such as camper vans or motor caravans.

## 4 Technical description

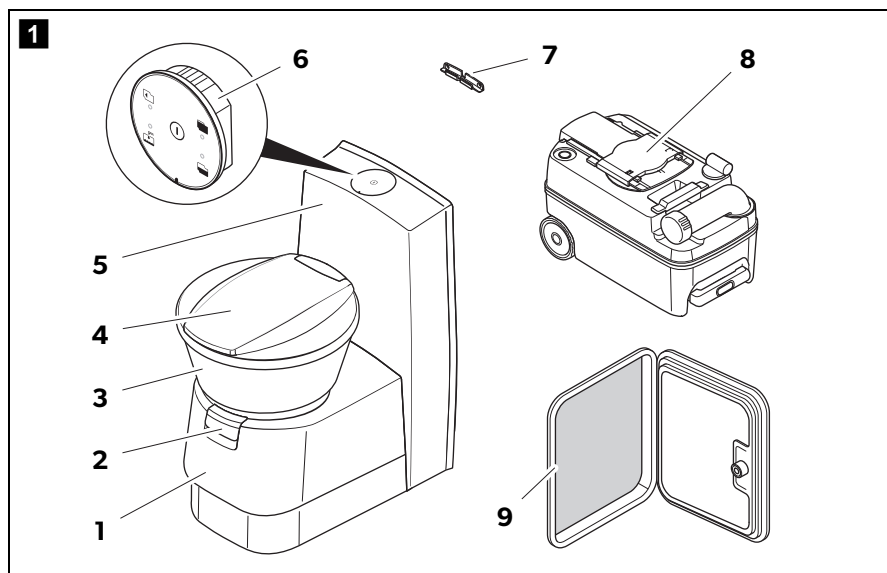
The cassette toilet CTx 4xxx consists of a toilet permanently installed in the vehicle and a removable, mobile cassette as a holding tank. The cassette is externally accessible through a door. Depending on the model, the toilet is supplied with rinse water from the vehicle-side freshwater tank or a tank integrated in the housing.

The following model versions of the toilet are available:

- **CT4050:** detached, without water tank, without console
- **CTLP4110:** detached, without water tank, low console
- **CTS4110:** detached, without water tank, with console

The 4050 models can be installed in a wet room.

## 4.1 Description of the components



No. in fig. 1	Designation
1	Housing for cassette tank
2	Draining slider for toilet bowl
3	Toilet bowl, ceramic
4	Lid and seat, rotatable
5	Console
6	Control and operating panel
7	CTLP, CTS only: Wall bracket
8	Cassette tank (capacity 19 l)
9	Service door (accessories)

## 5 Installing the toilet

### 5.1 Installing the service door

Model-dependent installation instructions are included with the service door (📖 **Dometic SK4, SK5**).

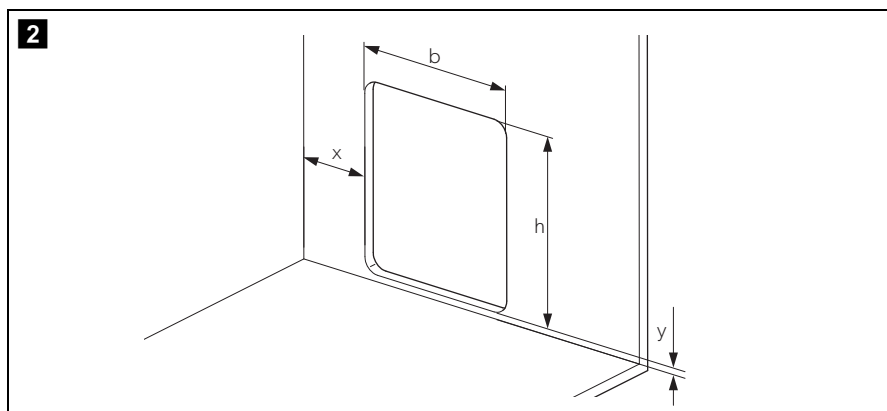


#### NOTE

Prepare the feed-through for the vent hose at the desired location (chapter “Venting the cartridge tank” on page 21).

### 5.2 Making wall cutouts

- Follow the instructions of the installation manual that comes with the service door.



- Make a rectangular opening in the outer wall with the following dimensions (fig. **2**):

#### **Service door wall cutout SK4:**

- $y = 25 \text{ mm}$
- $b = 305 \text{ mm} \pm 1 \text{ mm}$
- $h = 375 \text{ mm} \pm 1 \text{ mm}$

#### **Service door wall cutout SK5:**

- $y_{\min} = 12.5 \text{ mm}, y_{\max} = 28 \text{ mm}$
- $b = 310 \text{ mm} \pm 1 \text{ mm}$
- $h = 360 \text{ mm} \pm 1 \text{ mm}$

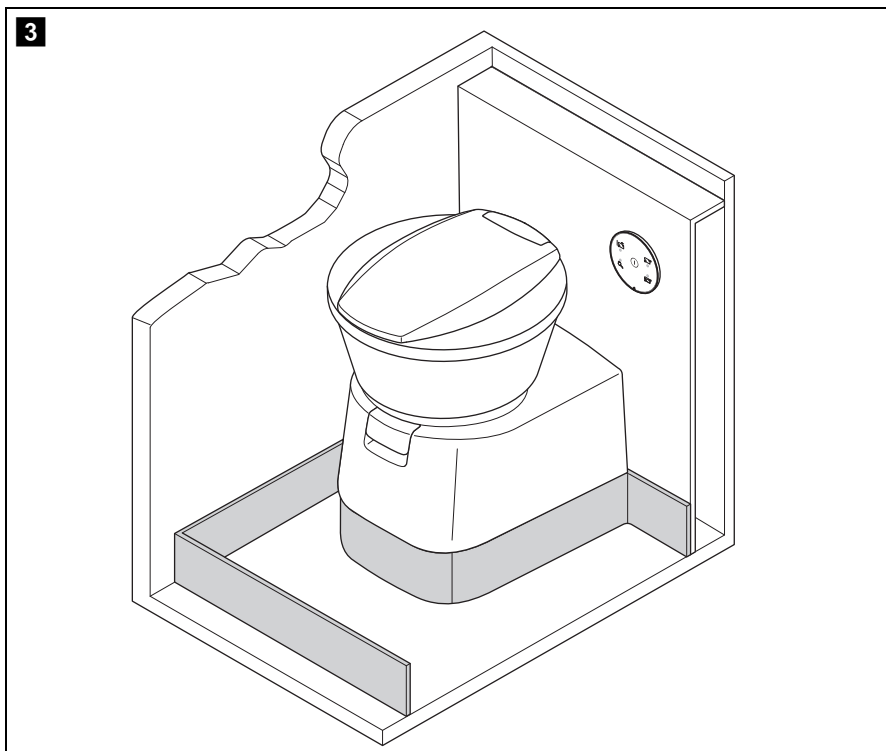
The dimension  $x$  results from the placement of the toilet.

## 5.3 Setting up the toilet



### NOTICE!

All components of the system must be installed in frost-free areas. In freezing temperatures, there is a risk of damage caused by frost.

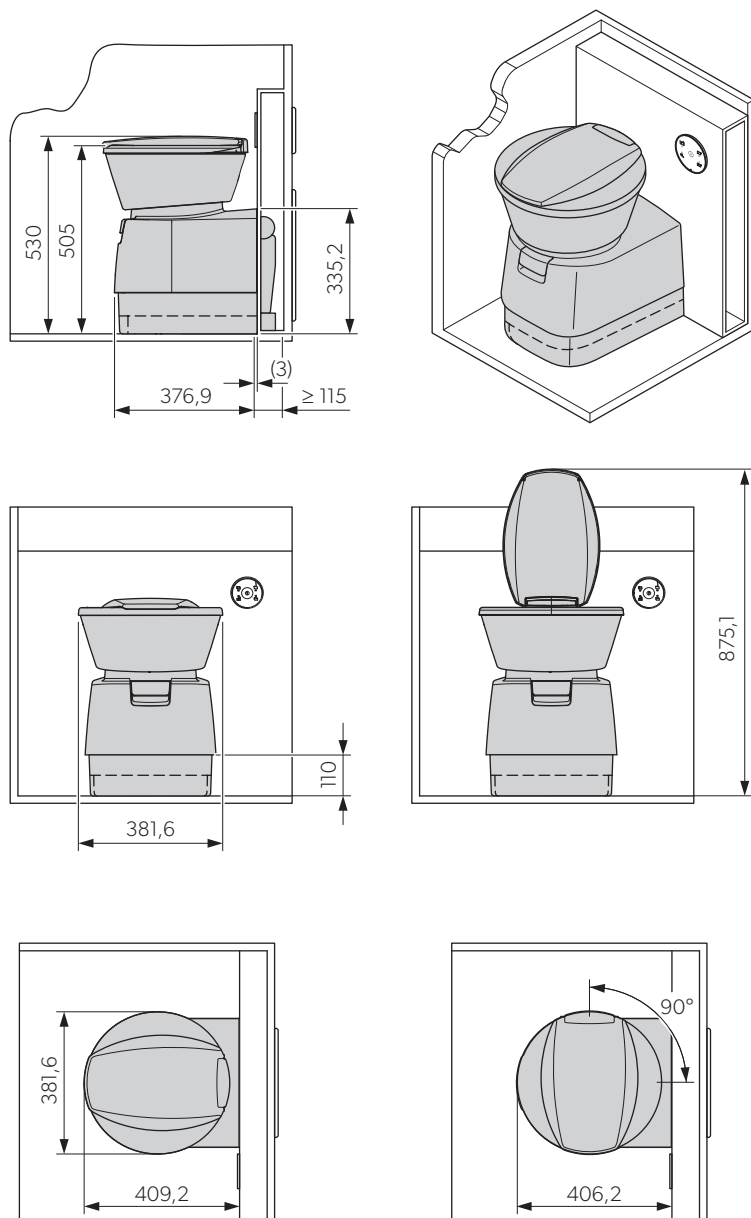


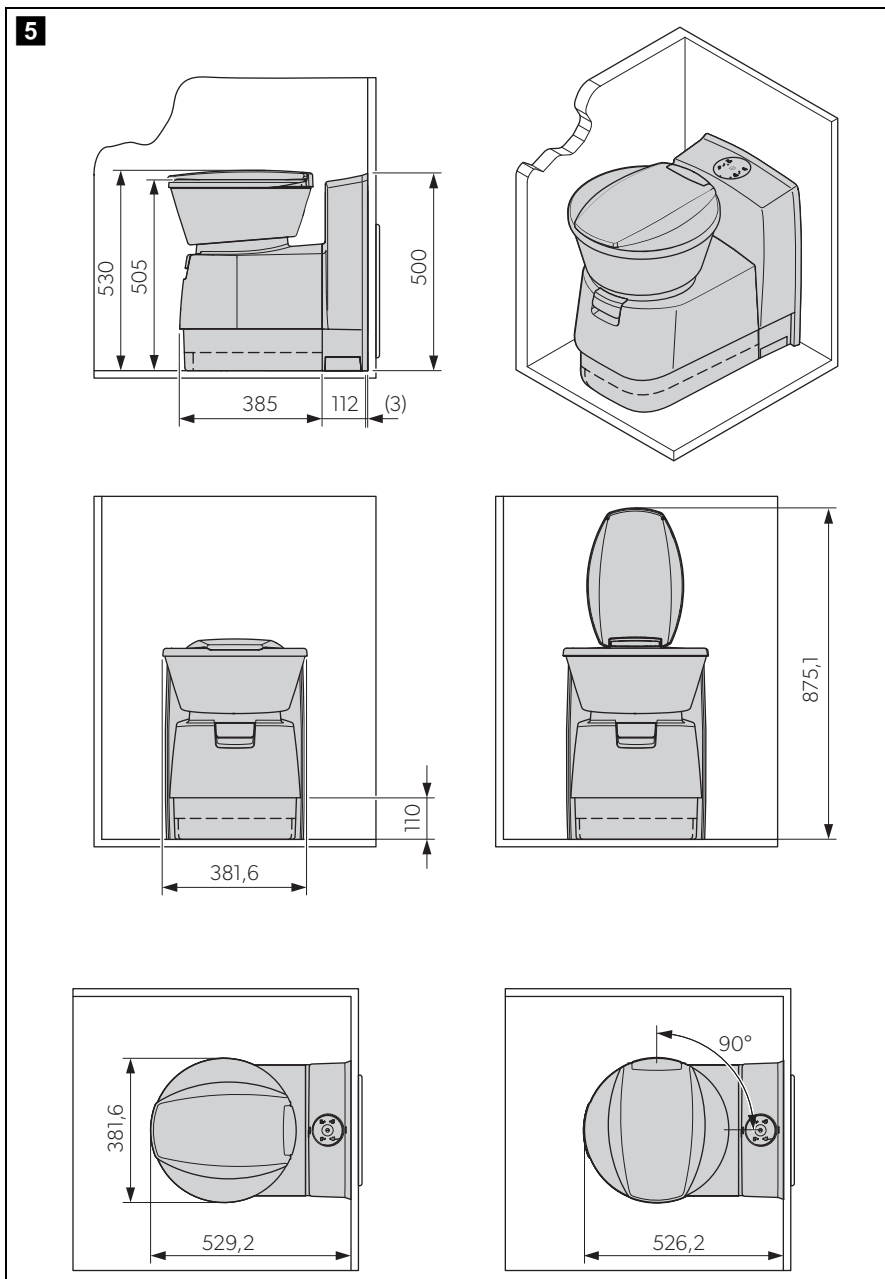
### NOTE

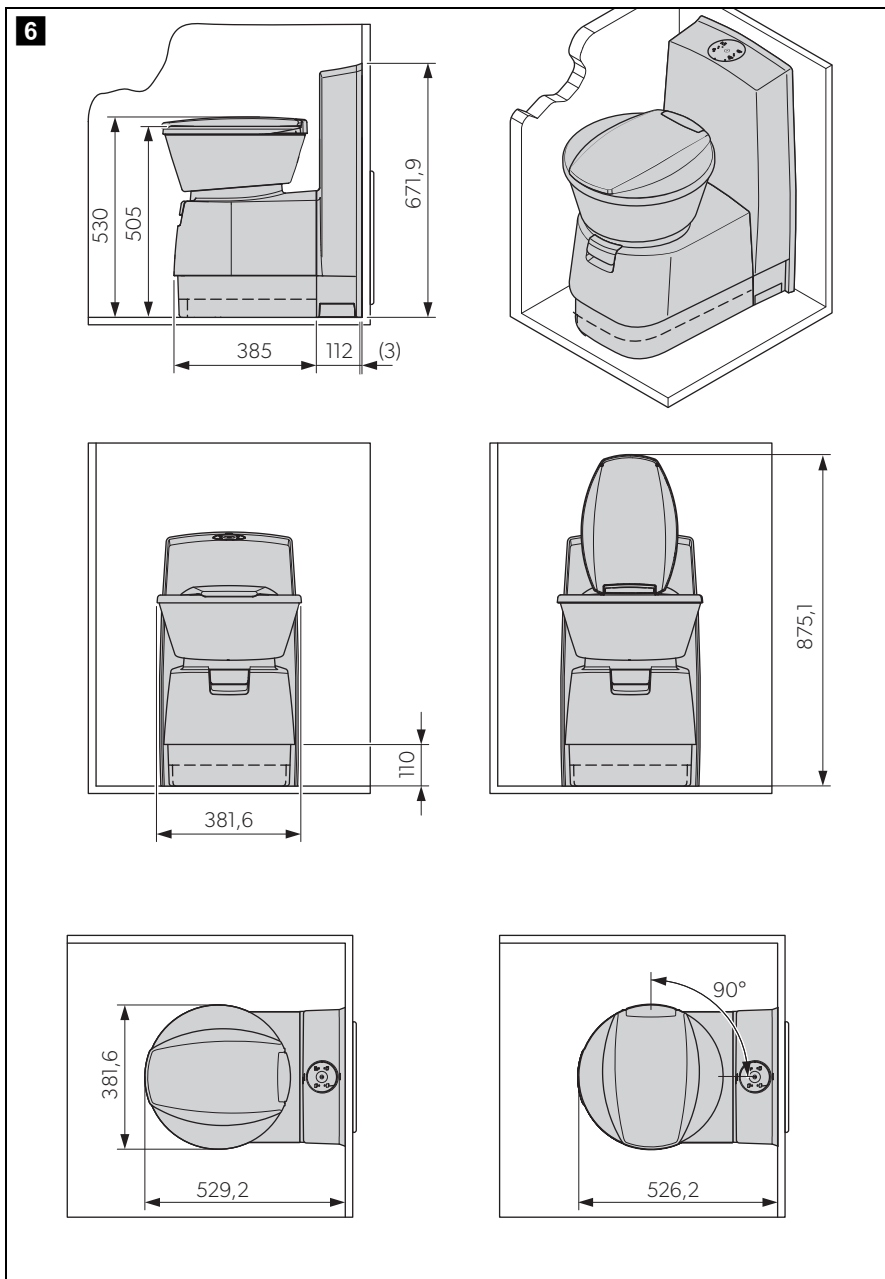
- When installing the toilet in a wet room, the manufacturer recommends that you connect the toilet to the shower tray.
- The toilet base is equipped with a protruding collar for receiving the upper edge of the shower tray (fig. **3**).

- Install the toilet according to the description for the respective model version.
- Set up the toilet so that it is flush to a vertical wall only.
- Leave enough space so that actuation of the draining slider is not restricted.
- For the installation, use the dimensional drawings:

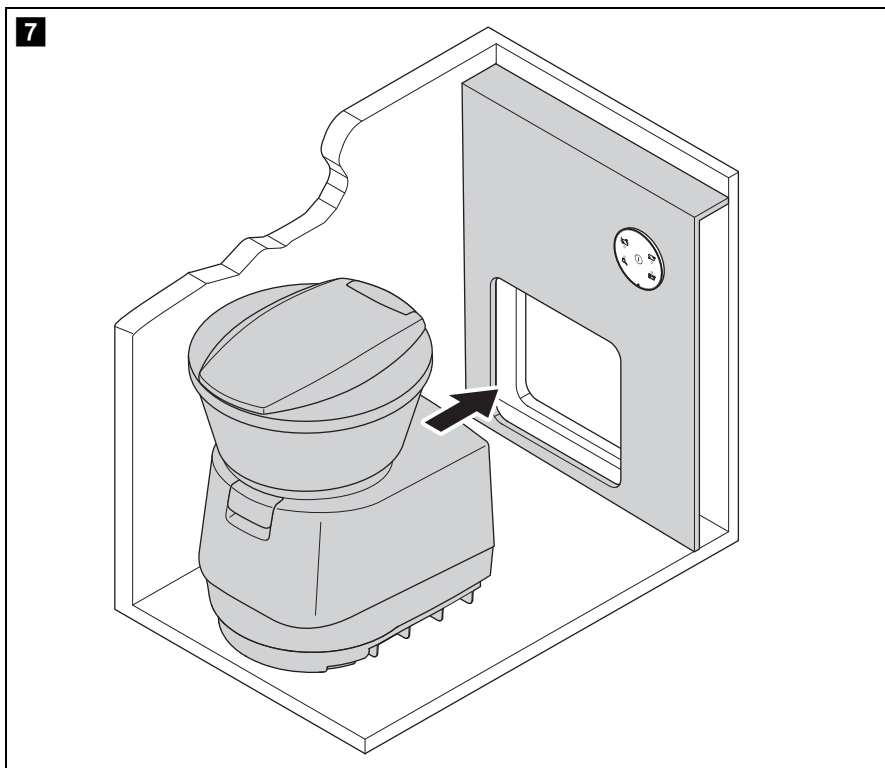


**CT4050: fig. 4****4**

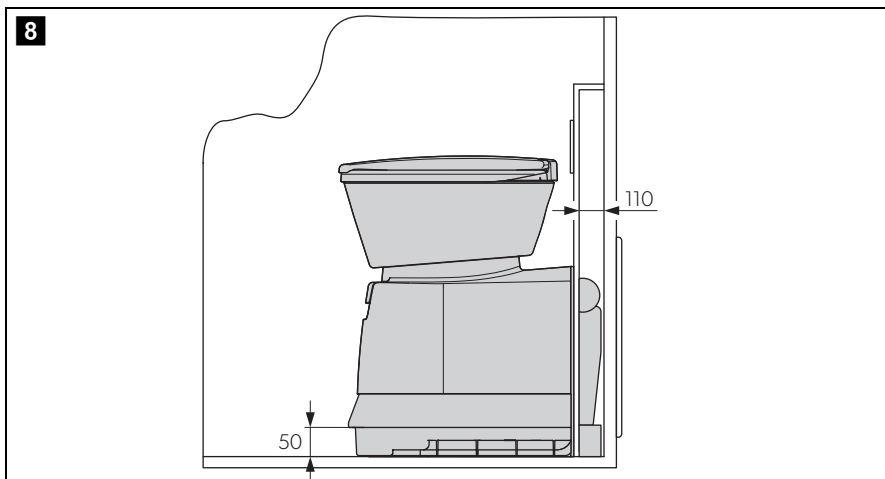
**CTLP4110: fig. 5**

**CTS4110: fig. 6**

## 5.4 Installing CT model



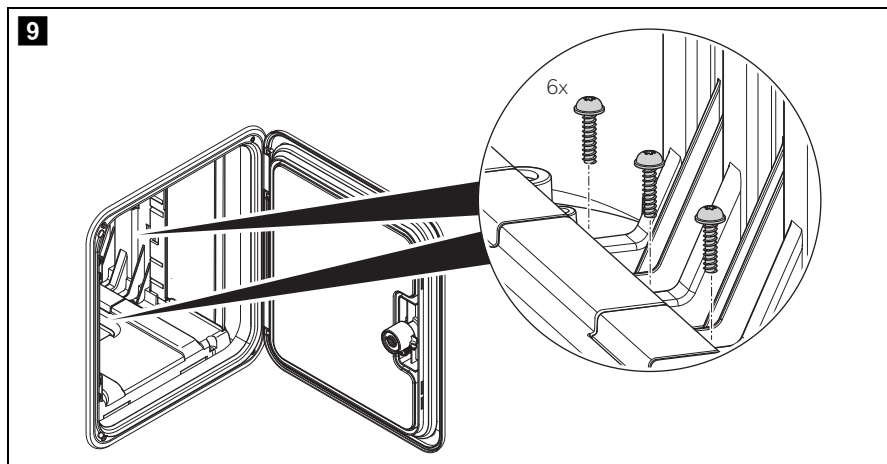
The detached model CT4050 has no integrated water tank and no console. Set up this model so that the wall behind it can accommodate the control unit of the toilet, the electrical connections and possibly a water tank. It is best if you put a box in front of the room wall (fig. **7**).



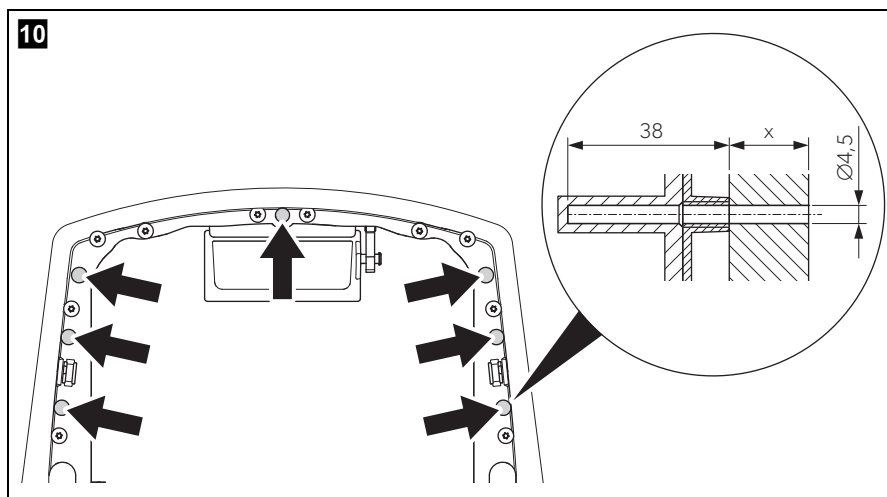
- Align the toilet according to the service door.
- Place the housing base flush with the installation box so that there is a clean transition and no gap.

**Attaching toilet CT 4050**

- Place the toilet in the desired position.



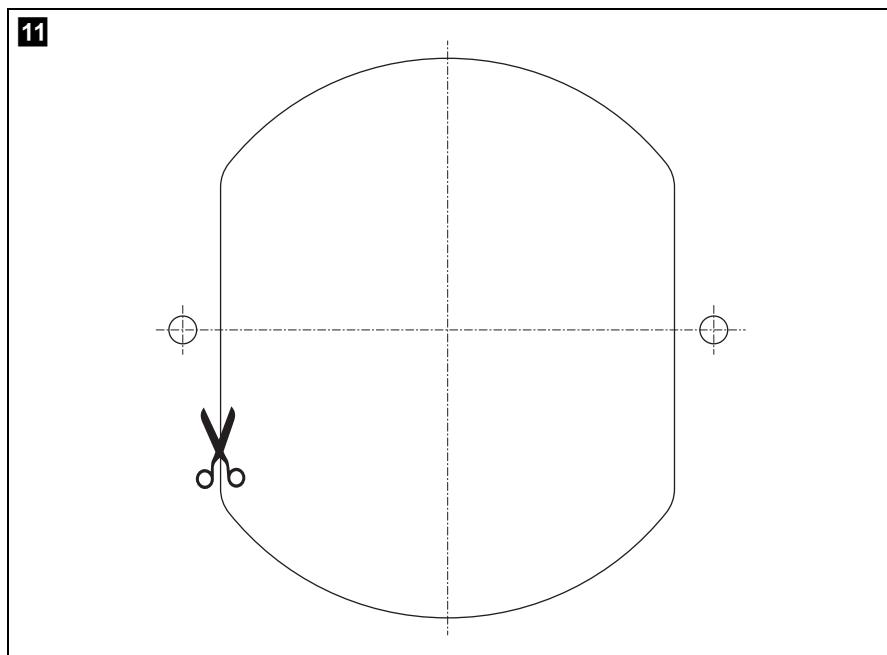
- Tightly fasten the base plate with six bolts (fig. **9**).



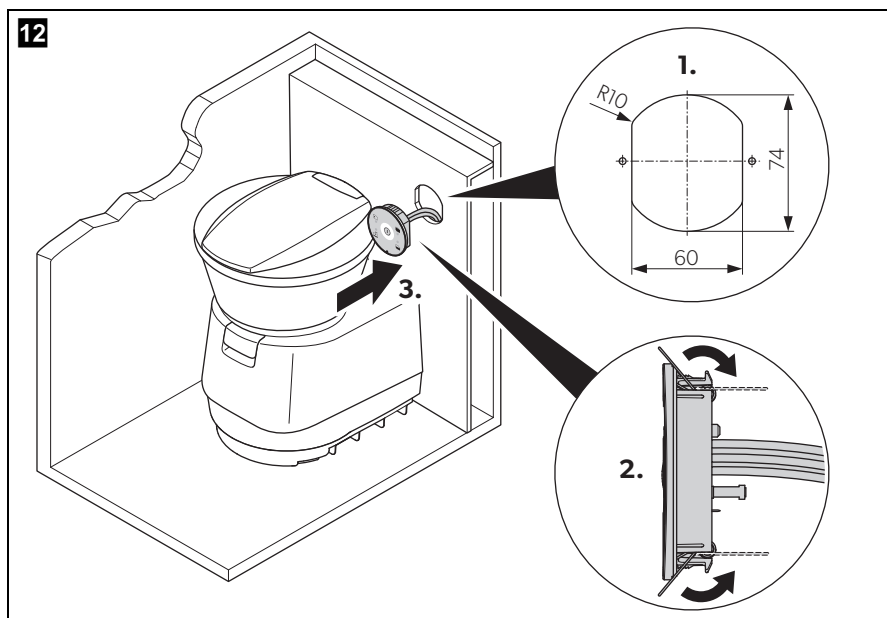
- Bolt the toilet housing to the wall (using a maximum of 7 bolts, not included) (fig. **10**).

**Installing the control and operating panel of the CT 4050 toilet**

Install the control and operating panel in the wall in the immediate vicinity of the toilet at an easily accessible location.



- Use a copy of the 1:1 scale template (fig. **11**) to make the wall cutout.



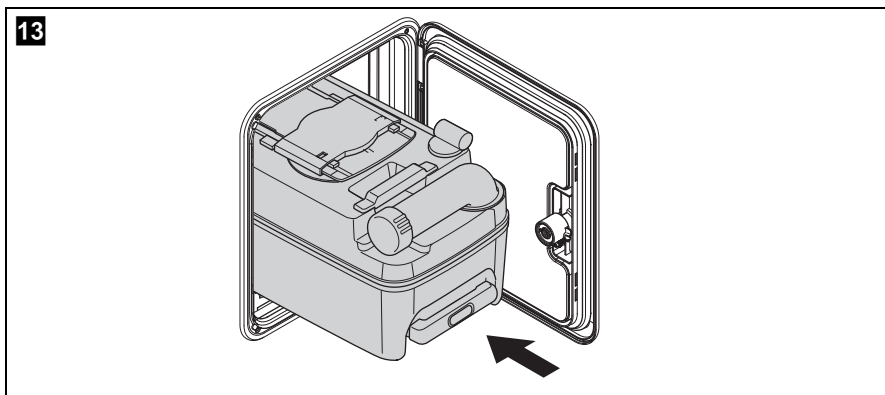
- Prepare an opening in the installation box for the control and operating panel (fig. **12**).
- Connect the electrical cables to the connections of the control and operating panel (chapter "Electrical connection" on page 22).


**CAUTION!**

There is a risk of injury due to the springs springing back!

- Press in the retaining springs of the control and operating panel and push it into the wall cutout.
- Follow the instructions in (chapter "Connecting the water supply" on page 20).





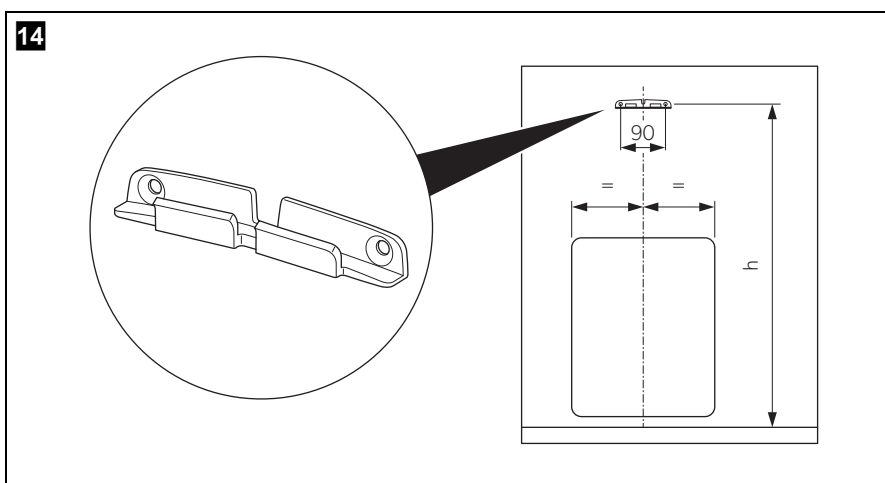
- Slide in the mobile tank cassette (fig. **13**).

## 5.5 Installing models CTLP, CTS

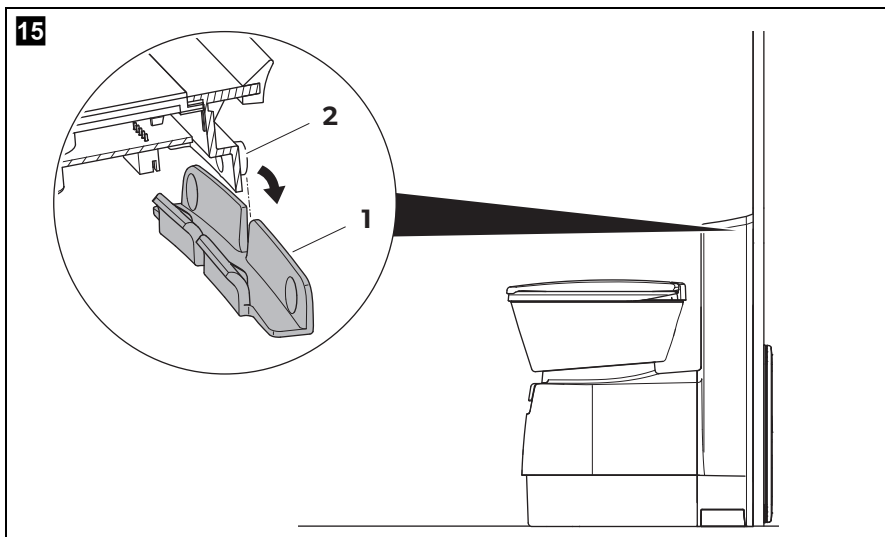
These models have a wall connection console. The control and operating panel is integrated in the wall connection console.

Set up all models with wall connection console directly against the room wall.

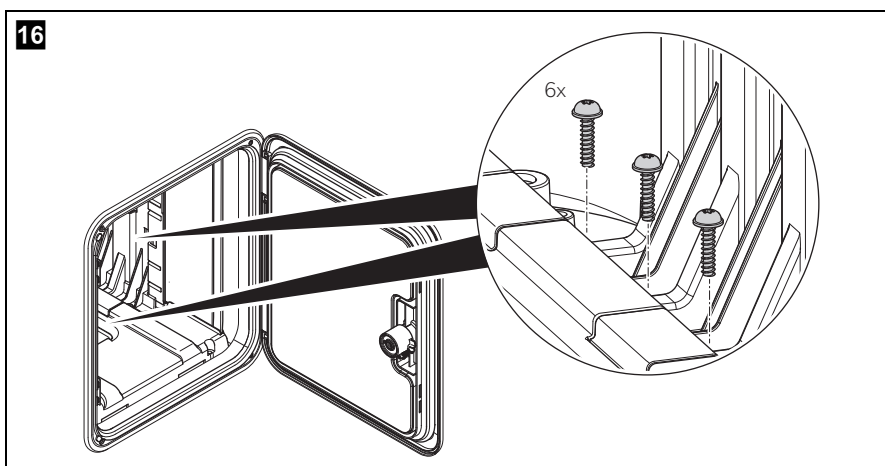
A previously attached wall bracket is used to secure the toilet and the wall bracket.



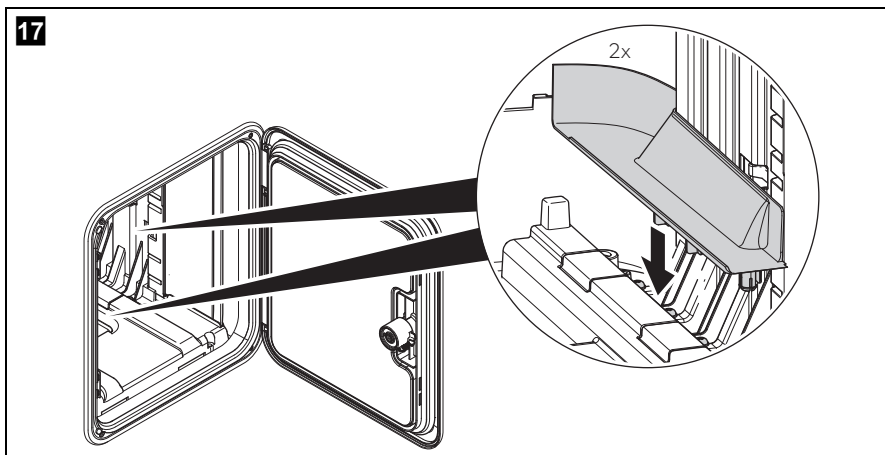
- Screw on the wall bracket, level, at the following height (fig. **14**):
- **CTLP4110**:  $h = 479.5 \text{ mm}$
  - **CTS4110**:  $h = 651.5 \text{ mm}$



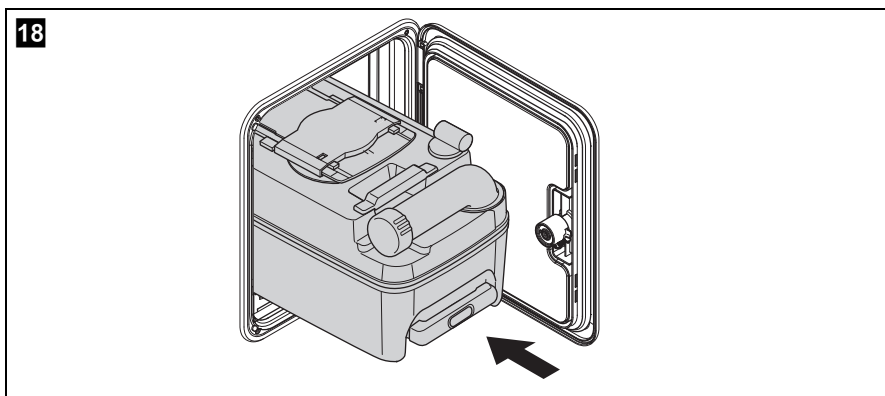
- Put the entire toilet module into the desired position in front of the wall bracket.
- Lift the toilet and hook the housing into the wall bracket (fig. **15**).



- Tightly fasten the base plate with six bolts (fig. **16**).

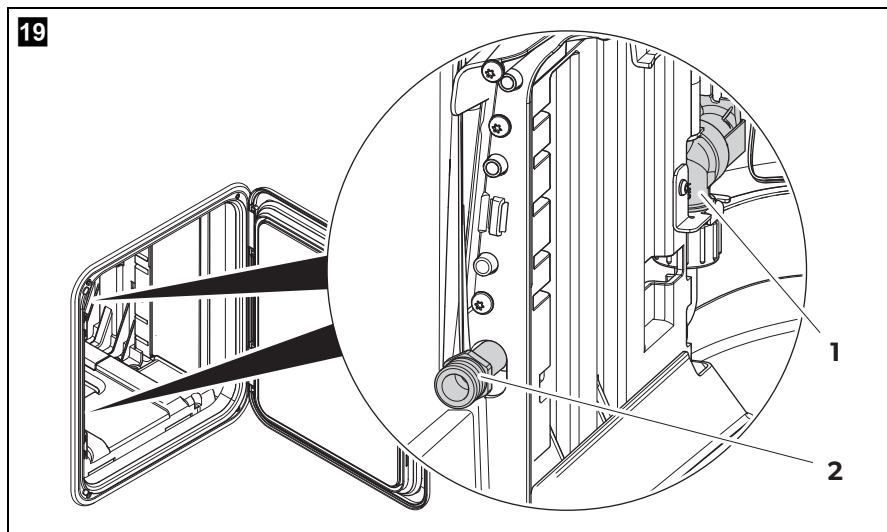


- Place the two covers over the fastening screws in the base plate (fig. **17**).
- Follow the instructions in (chapter "Connecting the water supply" on page 20).



- Slide in the mobile tank cassette (fig. **18**).

## 5.6 Connecting the water supply



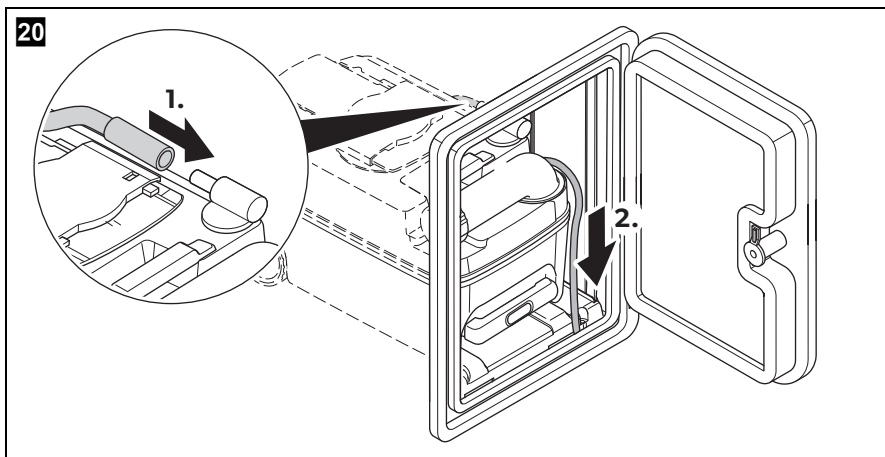
### NOTICE!

- The water supply is connected using a solenoid valve mounted in the toilet housing (fig. 19 1).
- The operating pressure (water pressure) of the solenoid valve should not exceed 6 bar.
- The solenoid valve is damaged by excessive pressure.

- Use a spring band hose clamp to attach the freshwater supply hose to the connection socket (fig. 19 2).
- Perform a leak test.

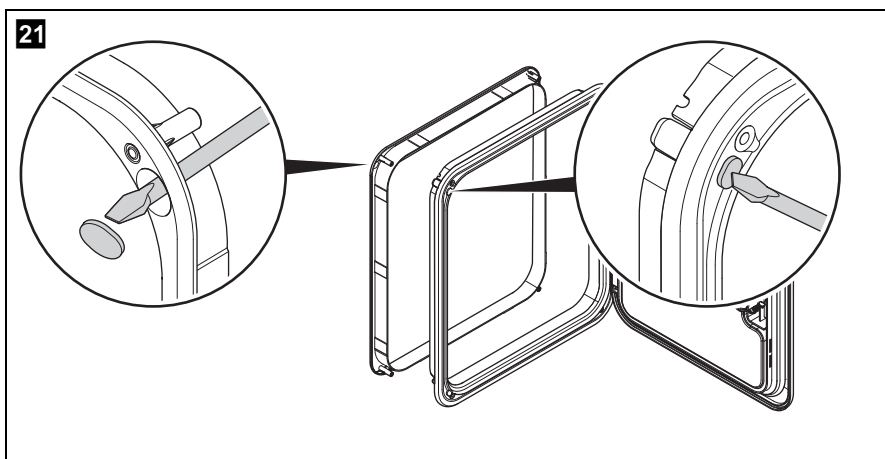
## 5.7 Venting the cartridge tank

### Service door SK4 and SK5

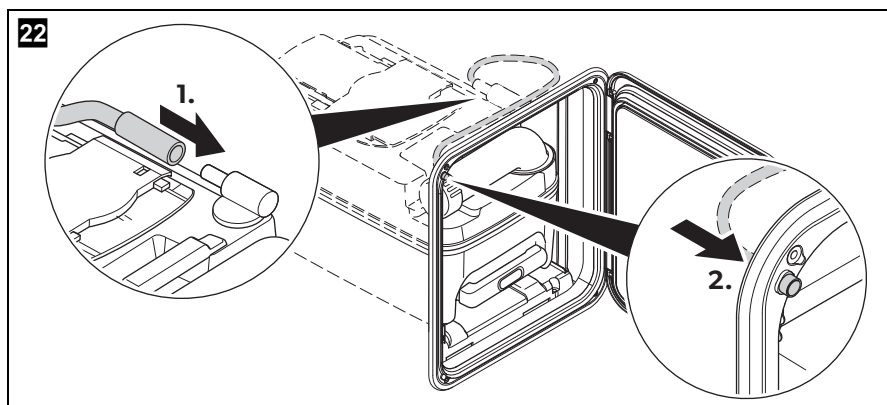


- In the niche floor, create an opening with a diameter of approx. 12 mm (fig. **20**).
- Run the vent hose into this opening for discharge to the outside.

### Service door SK5 (optional)



- Press the spray paint out of the inner frame of the door (fig. **21**).
- Install the door.



- Insert the hose of the vent into the integrated vent opening of the service door and the cassette tank (fig. 22).

## 6 Electrical connection



### **WARNING!**

Have the electrical connection carried out by an electrician.



### **NOTICE!**

- Do not connect the toilet to the voltage supply directly in parallel with other power-consuming devices.
- Do not connect the control of the toilet to a pressurised water pump.
- The rated capacity of an external water pump should not exceed 60 W.



### **NOTE**

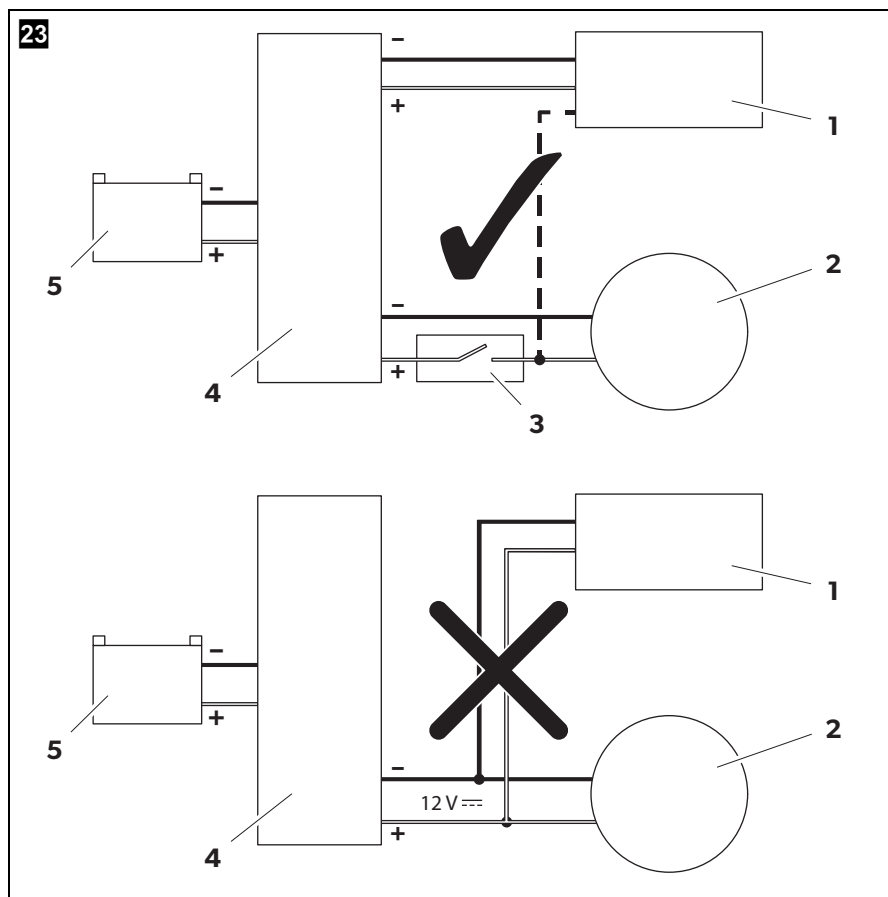
- The external water pump is not included in the scope of delivery.
- A pre-fuse is not necessary, because the toilet is internally fused.

## 6.1 Connecting external water pump



### NOTICE!

- The rated capacity of an external water pump should not exceed 60 W.
- The 12 V connection cable must have a cross-section of at least  $1.5 \text{ mm}^2$ .
- A 7.5 A automotive fuse is integrated in the toilet control.

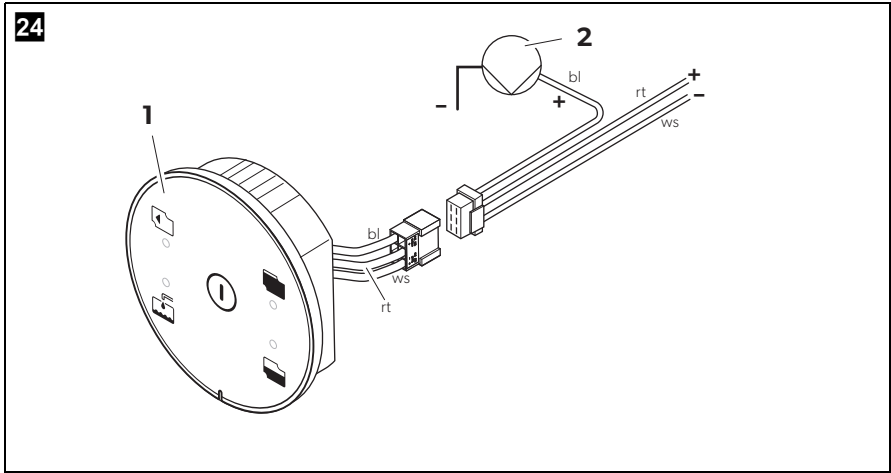


- Connect the toilet via the main terminal block of the vehicle to its own power supply (fig. **23**).

Key for fig. 23, page 23:

No.	Designation
1	Control and operating panel of the toilet
2	Water pump (please note: not a pressurised water pump!)
3	switch
4	Fuse/main terminal box
5	12 V= supply

System schema of the control and operating panel plug assignment:



➤ Connect the external water pump (fig. 24).

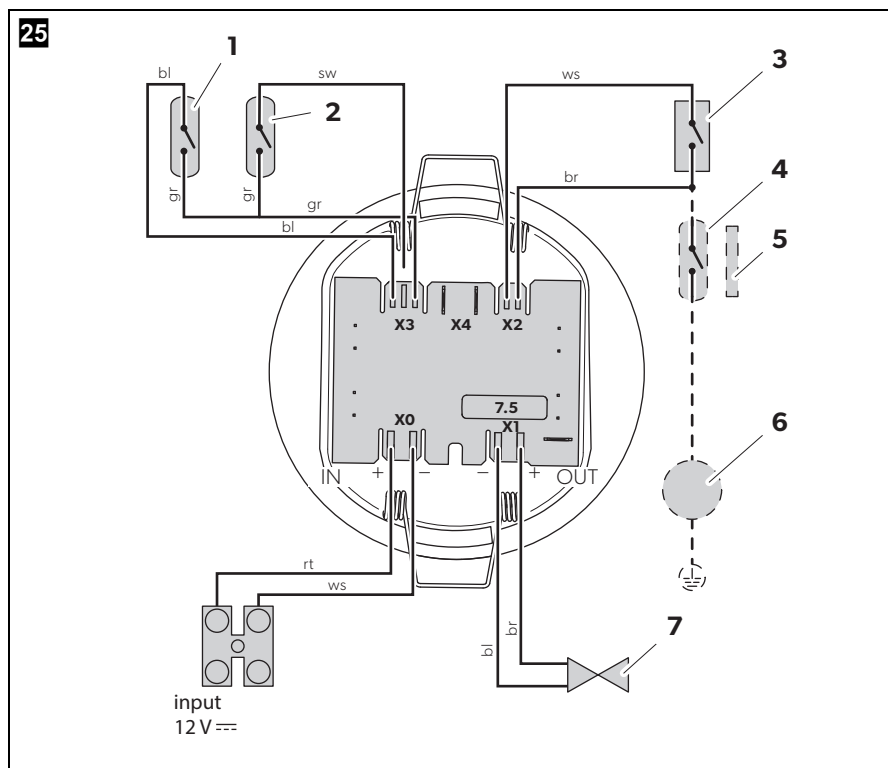
Key for fig. 24:

	bl	br	gr	rt	sw	ws
EN	Blue	Brown	Grey	Red	Black	White

No.	Designation
1	Control and operating panel
2	Water pump





Wiring diagram for external water tank:



Key for fig. **25**:

No.	Designation
1	Reed switch: Tank status 3/4 full
2	Reed switch: Tank status 1/1 full
3	Micro-switch: Position of cassette tank
4	With SOG <sup>®</sup> only: Reed switch for SOG <sup>®</sup> control
5	With SOG <sup>®</sup> only: SOG <sup>®</sup> control solenoid in the slide opening handle
6	With SOG <sup>®</sup> only: SOG <sup>®</sup> fan
7	Solenoid valve control

# 7      Technical data

	CT4000
Supply voltage:	12 V==
Current consumption:	Max. 2 A with internal pump Max. 5 A with external pump
Dimensions:	See fig. <b>4</b> , page 9 to fig. <b>6</b> , page 11
Operating temperature:	0 °C to +50 °C
Required pump output:	Min. 7 l/h
Capacity:	19 l (cassette tank)
Test mark:	 <b>NI</b>  10 R-047317



## AUSTRALIA

### Dometic Australia Pty. Ltd.

1 John Duncan Court - Varsity Lakes QLD 4227

☎ +1800 212121 • 📠 +61 7 55076001

Mail: sales@dometic.com.au

dometic.com



## AUSTRIA

### Dometic Austria GmbH

Neudorferstraße 108

A-2353 Guntramsdorf

☎ +43 2236 908070

☎ +43 2236 90807060

Mail: info@dometic.at

## BENELUX

### Dometic Branch Office Belgium

Zincstraat 3

B-1500 Halle

☎ +32 2 3598040

☎ +32 2 3598050

Mail: info@dometic.be

## BRAZIL

### Dometic DO Brasil LTDA

Avenida Paulista 1754, conj. 111

SP 01310-920 Sao Paulo

☎ +55 11 3251 3352

☎ +55 11 3251 3362

Mail: info@dometic.com.br

## DENMARK

### Dometic Denmark A/S

Nordensvej 15, Taulov

DK-7000 Fredericia

☎ +45 75585966

☎ +45 75586307

Mail: info@dometic.dk

## FINLAND

### Dometic Finland OY

Mestarintie 4

FIN-01730 Vantaa

☎ +358 20 7413220

☎ +358 9 7593700

Mail: info@dometic.fi

## FRANCE

### Dometic SAS

ZA du Pré de la Dame Jeanne

B.P. 5

F-60128 Plailly

☎ +33 3 44633525

☎ +33 3 44633518

Mail: vehiculesdeloisirs@dometic.fr

## GERMANY

### Dometic WAECO International GmbH

Huilefeldstraße 63

D-48282 Emsdetten

☎ +49 (0) 2572 879-0

☎ +49 (0) 2572 879-300

Mail: info@dometic-waeco.de

## HONG KONG

### Dometic Group Asia Pacific

Suites 2207-11 - 22/F - Tower 1

The Gateway - 25 Canton Road,

Tsim Sha Tsui - Kowloon

☎ +852 2 4611386

☎ +852 2 4665553

Mail: info@waeco.com.hk

## HUNGARY

### Dometic Zrt. Sales Office

Kerekgyártó u. 5.

H-1147 Budapest

☎ +36 1 468 4400

☎ +36 1 468 4401

Mail: budapest@dometic.hu

## ITALY

### Dometic Italy S.r.l.

Via Virgilio, 3

I-47122 Forlì (FC)

☎ +39 0543 754901

☎ +39 0543 754983

Mail: vendite@dometic.it

## JAPAN

### Dometic KK

Maekawa-Shibaura, Bldg. 2

2-13-9 Shibaura Minato-ku

Tokyo 108-0023

☎ +81 3 5445 3333

☎ +81 3 5445 3339

Mail: info@dometic.jp

## MEXICO

### Dometic Mx, S. de R. L. de C. V.

Circuito Médicos No. 6 Local 1

Colonia Ciudad Satélite

CP 53100 Naucalpan de Juárez

Estado de México

☎ +52 55 5374 4108

☎ +52 55 5393 4683

Mail: info@dometic.com.mx

## NETHERLANDS

### Dometic Benelux B.V.

Ecustraet 3

NL-4879 NP Etten-Leur

☎ +31 76 5029000

☎ +31 76 5029019

Mail: info@dometic.nl

## NEW ZEALAND

### Dometic New Zealand Ltd.

PO Box 12011

Penrose

Auckland 1642

☎ +64 9 622 1490

☎ +64 9 622 1573

Mail: customerservices@dometic.co.nz

## NORWAY

### Dometic Norway AS

Østerøyveien 46

N-3232 Sandefjord

☎ +47 33428450

☎ +47 33428459

Mail: firmapost@dometic.no

## POLAND

### Dometic Poland Sp. z o.o.

Ul. Puławska 435A

PL-02-801 Warszawa

☎ +48 22 414 3200

☎ +48 22 414 3201

Mail: info@dometic.pl

## PORTUGAL

### Dometic Spain, S.L.

Branch Office em Portugal

Rot. de São Gonçalo nº 1 - Esc. 12

2775-399 Carcavelos

☎ +351 219 244 173

☎ +351 219 243 206

Mail: info@dometic.pt

## RUSSIA

### Dometic RUS LLC

Komsomolskaya square 6-1

RU-107140 Moscow

☎ +7 495 780 79 39

☎ +7 495 916 56 53

Mail: info@dometic.ru

## SINGAPORE

### Dometic Pte Ltd

18 Boon Lay Way 06-140 Trade Hub 21

Singapore 609966

☎ +65 6795 3177

☎ +65 6862 6620

Mail: dometic@dometic.com.sg

## SLOVAKIA

### Dometic Slovakia s.r.o. Sales Office Bratislava

Nádražná 34/A

900 28 Ivanka pri Dunaji

☎/☎ +421 2 45 529 680

Mail: bratislava@dometic.com

## SOUTH AFRICA

### Dometic (Pty) Ltd.

#### Regional Office

#### South Africa & Sub-Saharan Africa

Unit 6-7 on Mastiff Linbro Park

2008 Johannesburg

☎ +27 11 4504978

☎ +27 11 4504976

Mail: info@dometic.co.za

## SPAIN

### Dometic Spain S.L.

Avda. Sierra del Guadarrama, 16

E-28691 Villanueva de la Cañada

Madrid

☎ +34 902 111 042

☎ +34 900 100 245

Mail: info@dometic.es

## SWEDEN

### Dometic Scandinavia AB

Gustaf Melins gata 7

S-42131 Västra Frölunda

☎ +46 31 7341100

☎ +46 31 7341101

Mail: info@dometicgroup.se

## SWITZERLAND

### Dometic Switzerland AG

Riedackerstrasse 7a

CH-8153 Rümlang

☎ +41 44 8187171

☎ +41 44 8187191

Mail: info@dometic.ch

## UNITED ARAB EMIRATES

### Dometic Middle East FZCO

P. O. Box 17860

S-D 6, Jebel Ali Freezone

Dubai

☎ +971 4 883 3858

☎ +971 4 883 3868

Mail: info@dometic.ae

## UNITED KINGDOM

### Dometic UK Ltd.

Dometic House, The Brewery

Blandford St. Mary

Dorset DT11 9LS

☎ +44 344 626 0133

☎ +44 344 626 0143

Mail: customerservices@dometic.co.uk

## USA

### Dometic RV Division

1120 North Main Street

Elkhart, IN 46515

☎ +1 574-264-2131