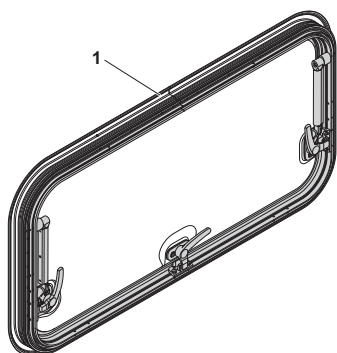
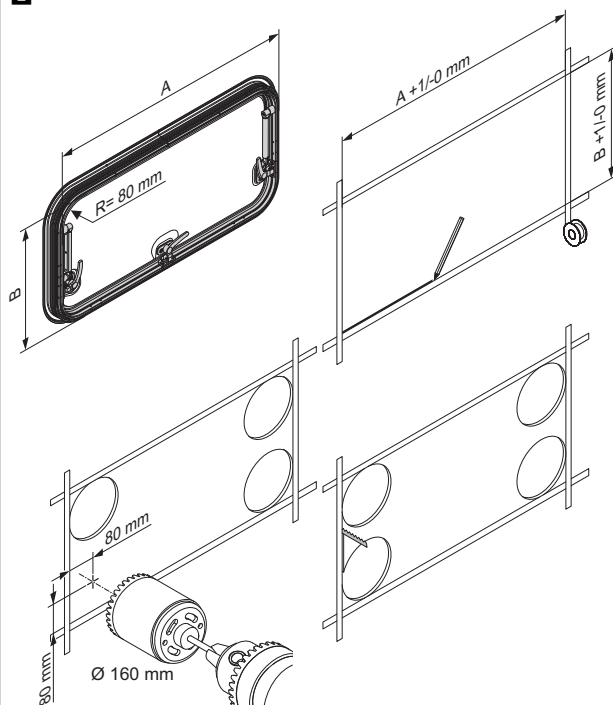


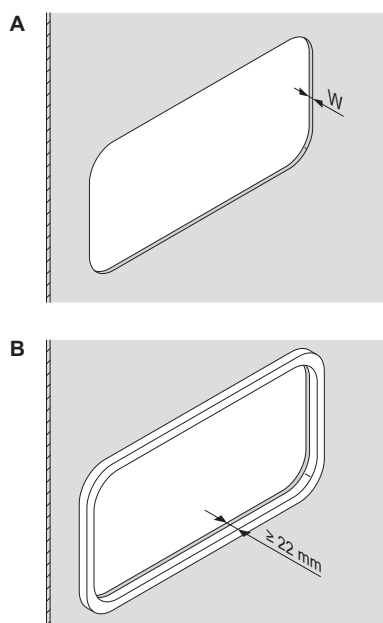
1



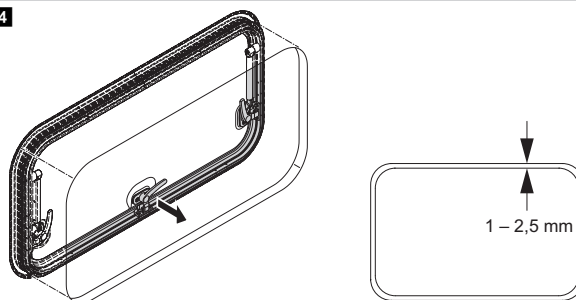
2



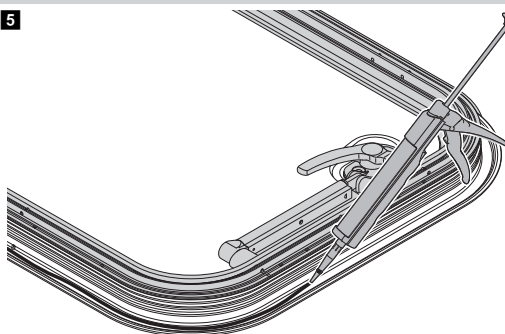
3



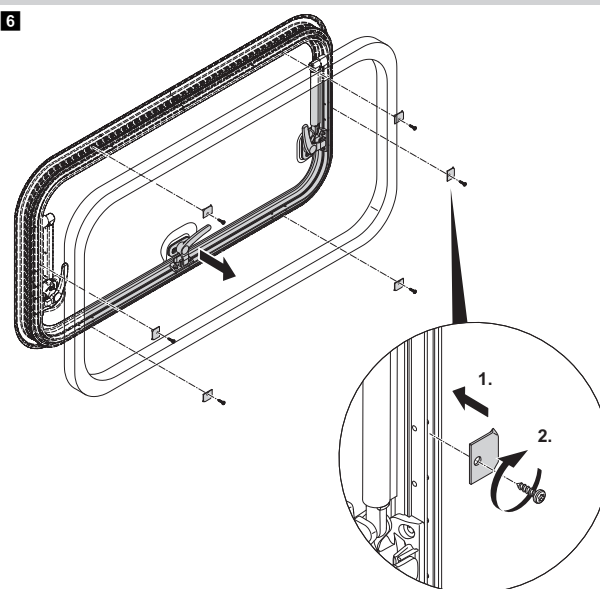
4



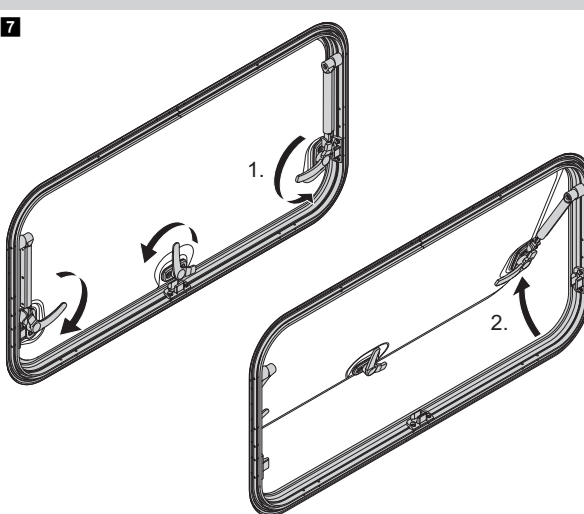
5



6



7



EN

Wall window

Installation and Operating Manual . . . 3

DE

Wandfenster

Montage- und Bedienungsanleitung 11

FR

Fenêtre

Instructions de montage
et de service 19

ES

Ventana para pared

Instrucciones de montaje y de uso . 28

IT

Finestra

Istruzioni di montaggio e d'uso . . . 37

NL

Wandvenster

Montagehandleiding en
gebruiksaanwijzing 45

DA

Vægvinduet

Monterings- og
betjeningsvejledning 53

SV

Väggfönstret

Monterings- och bruksanvisning . . . 61

NO

Veggvinduet

Monterings- og bruksanvisning . . . 69

FI

Sivuikkuna

Asennus- ja käyttöohje 76

PT

Janela de parede

Instruções de montagem e manual de
instruções 84

RU

Стенное окно

Инструкция по монтажу и
эксплуатации 92



S7P

PL

Okno ścienne

Instrukcja montażu i obsługi 100

CS

Okno

Návod k montáži a obsluze. 108

SK

Stenové okno

Návod na montáž a uvedenie do
prevádzky 116

HU

Fali ablak

Szerelési és használati útmutató . 124

Please read this instruction manual carefully before installation and first use, and store it in a safe place. If you pass on the product to another person, hand over this instruction manual along with it.

Table of contents

1	Explanation of symbols	3
2	Safety and installation instructions.	4
3	Scope of delivery	5
4	Accessories	5
5	Intended use	5
6	Instructions before installation	6
7	Installing windows	7
8	Using the window.	9
9	Maintaining and cleaning the window	9
10	Warranty	10
11	Disposal	10
12	Technical data	10

1 Explanation of symbols



NOTICE!

Failure to observe this instruction can cause material damage and impair the function of the product.



NOTE

Supplementary information for operating the product.

► **Action:** This symbol indicates that action is required on your part. The required action is described step-by-step.

✓ This symbol describes the result of an action.

Fig. 1 5, page 3: This refers to an element in an illustration. In this case, item 5 in figure 1 on page 3.

2 Safety and installation instructions

Please observe the prescribed safety instructions and stipulations from the vehicle manufacturer and service workshops.

The manufacturer accepts no liability for damage in the following cases:

- Damage to the product resulting from mechanical influences
- Alterations to the product without express permission from the manufacturer
- Use for purposes other than those described in the operating manual



NOTE

If you do not have sufficient technical knowledge for installing the components in vehicles, you should have a specialist install the wall window in your vehicle.

Please note the following:

- If faults or disturbances occur, consult a specialist workshop immediately.
- Before starting your journey, check that the wall window is locked properly.
- Before starting your journey, check the wall window for damage (such as tension cracks in the acrylic glass).
- Do **not** open the wall window while driving.
- Do **not** open the wall window in strong wind or rain.
- Close the wall window if it rains or snows.
- Do **not** leave the vehicle with the wall window open.
- Keep the wall window free of snow and ice.

3 Scope of delivery

No. in fig. 1	Description
1	Window

4 Accessories

Available as accessories (not included in the scope of delivery):

Description
Pleated blind
Installation kit (Fastening bolts 3.5 x 12 mm, securing clips)

5 Intended use

The S7P wall window is suitable for installing in delivery vans with curved exterior surfaces (radius of 5000 mm). The wall windows are designed as vent windows.

The S7P window is designed for a wall thickness of 22 – 43 mm.

6 Instructions before installation

- Before installation, check the wall thickness of your vehicle. Consult the vehicle manufacturer if you have any questions.
You need securing clips (not supplied) to suit the thickness of the wall (see chapter “Preparing the installation” on page 6).
- With sheet metal coverings, the wall thickness must be increased to at least 22 mm by adding a suitable mounting frame (e.g. wooden frame).
- When choosing the installation location, observe the following:
 - Adjoining components (attachment and reinforcing parts), cables and cabinets in the vehicle interior must not get damaged when sawing the hole.
 - Sufficient space needs to be available for installing the inner and outer frames.
 - Only install the wall window on curved wall surfaces with a radius of 5000 mm.

6.1 Pressing out the hole

See fig. **2**

6.2 Preparing the installation

Supplementary to fig. **3**

- Measure wall thickness W (**A**)
If the wall thickness is less than 22 mm, then you must add to the wall section with a suitable mounting frame (**B**)

- Determine the type of clip by referring to the following table:

Wall thickness W	Clip type	Item no.
22 – 23 mm	M 1139	9104116094
24 – 25 mm	M 1110	9104116095
26 – 27 mm	M 1134	9104116096
28 – 29 mm	M 1135	9104116097
30 – 31 mm	M 1136	9104116098
32 – 33 mm	M 1137	9104116099
34 – 35 mm	M 1142	9104116100
36 – 37 mm	M 1143	9104116101
38 – 39 mm	M 1144	9104116102
40 – 41 mm	M 1145	9104116031
42 – 43 mm	M 1146	9104116104

7 Installing windows

See fig. **4**

- Check that the window has sufficient space around it (approx. 1 to 2.5 mm) in the wall section.
- Clean the wall section externally in the mounting area.

See fig. **5**



NOTICE!

Observe the sealant manufacturer's instructions.

- Seal the window frame with a flexible non-hardening sealing compound (e.g. SikaLastomer-710).

- Determine the number of clips by referring to the following table:

Window size W x H	Number of securing clips per side		Window size W x H	Number of securing clips per side	
	Horizontal	Vertical		Horizontal	Vertical
300 x 450	2	3 – 4	900 x 500	6	3
450 x 510	4	3	900 x 600		4
500 x 300		2	1000 x 300		2
500 x 400		3	1000 x 450		3
510 x 510		3	1000 x 510		3
550 x 600		4	1000 x 600		4
600 x 250		2	1100 x 350		2
600 x 510		3	1100 x 600		4
600 x 550		4	1200 x 300		2
650 x 300		2	1200 x 450	8	3
650 x 400		3	1300 x 510		3
700 x 350	6	2	1300 x 600		4
700 x 500		3	1300 x 700		6
800 x 400		3	1400 x 600		4
800 x 510		3	1450 x 550		4
900 x 450		3			

See fig. 6

- Glue the mounting frame to the vehicle wall, e.g. with double-sided adhesive tape.
- Insert the window from the outside in the centre of the wall section.
- Press the window slightly so that the packing compound spreads out.
- Fasten the window using the fastening bolts and the appropriate securing clips.

Firstly fasten the clips on the left and right at the bottom.

**NOTE**

If a window frame guide rail does not fit evenly against the vehicle wall, then you must use more clips, where required, than are specified in the table.

- Remove the protective film from both sides of the window glass.
- After installing, check the wall window works properly.

8 Using the window

8.1 Using S7P

Opening the window (fig. 7)

- Proceed as follows for each rotary bolt:
Turn the rotary bolt by 90°.
- Tilt the window pane outwards to the desired opening angle.

Closing the window (fig. 7)

- Close the window slowly.
- Proceed as follows for each rotary bolt:
Turn the rotary bolt by 90°.

9 Maintaining and cleaning the window

**NOTICE!**

Do not use sharp or hard objects for cleaning as these may damage the window glass.

Only use cleaning agents that are approved by the manufacturer. Acrylic glass polish (item no. 9104100242), special polishing cloth (item no. 9104100243) and acrylic glass cleaning agent (item no. 9104100244).

- Put talcum powder on the rubber seal.

10 Warranty

The statutory warranty period applies. If the product is defective, please contact the service partner in your country (addresses on the back on the instruction manual).

Our experts will be happy to help you and will discuss the warranty process with you in more detail.

11 Disposal

- Place the packaging material in the appropriate recycling waste bins wherever possible.



If you wish to finally dispose of the product, ask your local recycling centre or specialist dealer for details about how to do this in accordance with the applicable disposal regulations.

12 Technical data

Window size	Overall dimensions	Section dimensions	Clearance dimensions	Weight	Item no.
W x H	W x H	W x H	W x H	kg	
280 x 380	308 x 408	280 x 380	230 x 330	2.9	9104116042
490 x 500	518 x 528	490 x 500	440 x 450	4.0	9104116041
560 x 465	588 x 493	560 x 465	510 x 415	4.5	9104116040
700 x 510	728 x 538	700 x 510	650 x 460	4.8	9104116039
560 x 465	778 x 493	750 x 465	700 x 415	4.8	9104116038
818 x 315	843 x 343	818 x 315	768 x 265	4.6	9104116037
960 x 450	988 x 478	960 x 450	910 x 400	5.6	9104116036
985 x 465	1013 x 493	985 x 465	935 x 415	6.1	9104116035